



CLIVEPEARCE
Now you're moving

2 Bedrooms

Apartment - Basement

Asking Price

£235,000

Located in

Truro



www.clivepearceproperty.com



Infirmary Hill

Truro | Cornwall | TR1 2FG



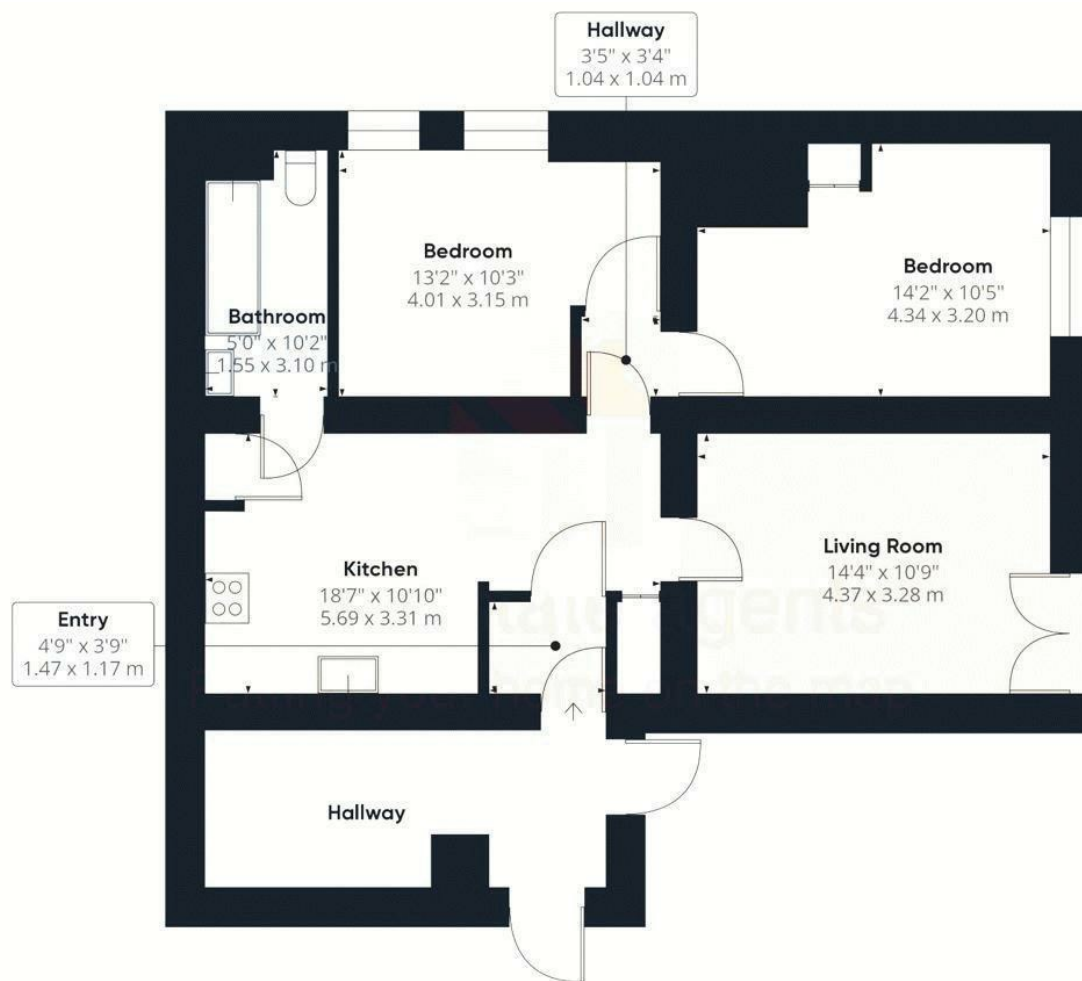
A stylish and spacious two bedroom apartment with enclosed garden and parking. Ideally located.

Infirmary Hill

£235,000 Leasehold



- Spacious ground floor apartment
- Enclosed garden and side access
- Parking space
- Two bedrooms
- Open plan living/dining space with doors to garden
- Stylish kitchen with integrated appliances
- Bathroom with shower over bath



Council Tax Band C

Local Authority

Agents Note: Whilst every care has been taken to prepare these particulars, they are for guidance purposes only. All measurements are approximate and are for general guidance purposes only and whilst every care has been taken to ensure their accuracy, they should not be relied upon and potential buyers/tenants are advised to recheck the measurements.

Energy Efficiency Rating		
	Current	Potential
Very energy efficient - lower running costs		
(92 plus) A		
(81-91) B		
(69-80) C		
(55-68) D		
(39-54) E		
(21-38) F		
(1-20) G		
Not energy efficient - higher running costs		
England & Wales	EU Directive 2002/91/EC	

31 Lemon Street
Truro
Cornwall
TR3 7QB



CLIVEPEARCE
Now you're moving

hello@clivepearceproperty.com

01872 272622

www.clivepearceproperty.com